

SOCIAL EQUITY WITHIN THE SUPPLY CHAIN

Achieve Innovation Credit with
Pioneering Supply Chain Certifications



Overview of Social Equity within the Supply Chain Pilot Credit

[Learn more about the Social Equity within the Supply Chain Pilot Credit.](#)

The LEED BD+C v4 and v4.1 pilot credit was launched in December 2020 to drive social equity through the supply chain of building materials (1 point).

Intent: To create more equitable, healthier environments for those affected by and involved in the production of materials and products used in a project, including the stages of raw materials extraction, processing, manufacturing, and assembly of components and products.

Option 1: Meet 8 International Labor Organization (ILO) Fundamental Conventions based on the Human Rights Prerequisite using pre-approved supply chain certifications.

Supply chain certifications include the Aluminum Stewardship Initiative Chain of Custody Standard, Concrete Sustainability Council (CSC), the Forest Stewardship Certification CoC, the ResponsibleSteel Certification, and more.

Submitting Credit Documentation to USGBC

1 Determine if the project is eligible for the Social Equity within the Supply Chain Pilot Credit (IPpc144) by using the [Pilot Credit Registration Form Link](#) on the United States Green Building Council (USGBC) website. On the form, fill out the project ID, project name, the LEED project type, and the version. If the project is eligible, the credit will appear under "Open Pilot Credits."

2 If eligible, register for the credit by selecting the checkbox next to the credit name, then scroll down and click submit. Save the registration confirmation email.

- Identify certified products or suppliers used in the project.
- The credit requires the use of 3 permanently installed products from at least 2 different manufacturers.

3 Obtain evidence from the supplier verifying their certification. USGBC requires documentation providing proof of compliance as a submittal for the pilot credit. Complete the pilot credit survey, which is found on USGBC's website. Save the survey completion email. [Pilot Credit Survey Link](#)

4 Submit the documentation to USGBC through LEED Online. The documentation should include the products' proof of compliance, the pilot credit registration confirmation email, and the survey completion email.

- Open the project in LEED Online. In the credits tab, open the Innovation credit. Open the "Form (v01)" and select the number of applicable pilot credits. In the box below, fill out the name "IPpc144: Social Equity within the Supply Chain" and save the form. Next, under the Innovation credit, click "Uploads." Click "Add File" to submit the pilot credit documentation.

Prepared by:



SustainableSolutions
CORPORATION

SOCIAL EQUITY WITHIN THE SUPPLY CHAIN LEED PILOT CREDIT

Identifying CSC Certified Products



Concrete Sustainability Council Certification (v2.0 and above) is pre-approved by USGBC to meet the 8 ILO based on the Human Rights Prerequisite.



Concrete suppliers who have achieved certification can be identified by their CSC certificate.

Find CSC Certified Companies and Plants.

- Certification system covers four levels: Bronze, Silver, Gold, Platinum
- All levels of certification for concrete meet the pilot credit requirements.

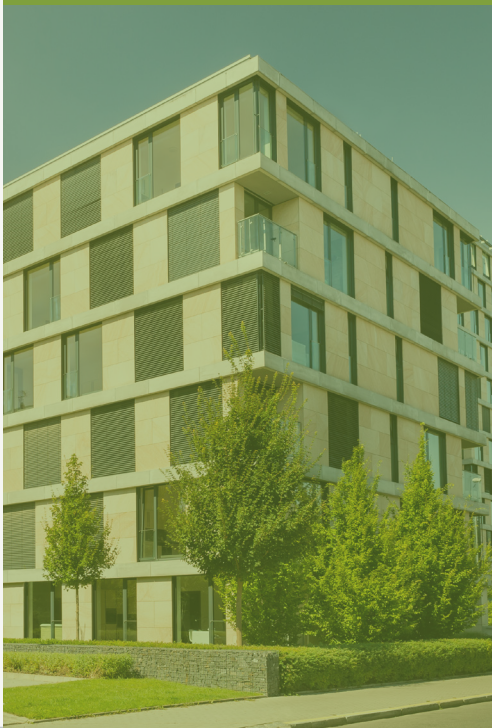
In addition to CSC Certification, USGBC has pre-approved standards such as the Aluminum Stewardship Initiative Chain of Custody Standard, the ResponsibleSteel Certification, the Forest Stewardship Certification CoC, and more.

 **[Learn more about the pre-approved standards.](#)**

CSC Certification has a Human Rights Prerequisite (P2.01) for all products and certification levels. The table below highlights the comparison between CSC Prerequisites and LEED Pilot Credit Criteria:

Universal Declaration of Human Rights	CSC Prerequisite	LEED Requirement
Human Rights Risk Situations	✓	
Avoidance of Complicity	✓	
Resolving Grievances	✓	✓
Discrimination, Vulnerable Groups and Equal Opportunity for Women and Men in the World of Work (ILO Convention, 111)	✓	
Civil and Political Rights	✓	
Fundamental Principles and Rights at Work (ILO Convention 87, 98, Appendix D)	✓	✓
Child Labor (ILO Convention 138 and 182)	✓	✓
Forced Labor (ILO Convention 29, 105, 203)	✓	✓

CSC ILO & Social Equity Criteria



To learn more, visit the [Concrete Sustainability Council Website](#) or send an email to: info@concretesustainabilitycouncil.com



Prepared by:
