

NRMCA NATIONAL READY MIXED CONCRETE ASSOCIATION 



2016 - 2017 Developing Industry Leaders OES Group

Group Participants

Thomas "TJ" O'Connor – Area Manager, Central Concrete, San Jose, CA
 Robert Welker – Asst. Ops Manager – Fleet/Maint, Ingram Concrete, Brownwood, TX
 Matt Janas – Operations Manager, Ozinga, Mokena, IL
 Kevin O'Connell – Manager, Suburban Concrete Operations, Kuhlman Corp, Maumee, OH

NRMCA Staff Liaison

Kevin Walgenbach – Vice President, Compliance and Regulatory Affairs, NRMCA

PROJECT FOCUS: GET HOME SAFE!

Using the FLEET Benchmark Study to SAVE MONEY

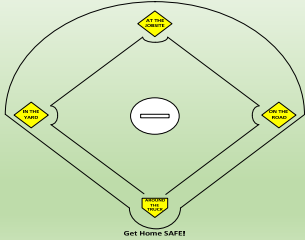
GET HOME SAFE!

FOCUS ON 4 AREAS:

- Around the Truck
- On the Road
- At the Jobsite
- In the Yard

• The challenge is to be safe AND efficient with our resources

• Use the benchmark study to impact change at the field level



GET HOME SAFE

What's in the NRMCA Fleet Benchmarking Study?

Lots and Lots of Great Operational Information

These are just some of the key operational metrics in the study:

- Average Miles per Gallon of a Mixer Truck (3.14 mpg)
 - QUICK EXAMPLE OF SAVING MONEY:
 - THINK ABOUT: How can you save one gallon of fuel per day per truck?
 - For a fleet of 100 trucks... that's \$50,000+ a year.
- Average # of Road Calls per Month (up to 11.74 per company)
 - This takes away from actual production of drivers and mechanics
- The Percentage of Idle Time for Trucks (34%)
 - Too much idle time. IDLE TRUCKS WASTE BIG BUCKS.
- Average Service life of a Mixer Drum (8.16 years)
 - Keep them clean and maintained to extend the life of a drum.
- Average Age of a Loader (11.85 years)

HOW DO WE APPLY THE BENCHMARKS AND GET COST SAVINGS?

We set a goal of saving ~~\$200,000~~ \$200,000
 4 options at \$50,000 each
 (\$2 per truck per day for 100 trucks)

Option 1: Home Plate	Focus on Fuel Mileage & Tire Pressure – Save \$50,000
Option 2: First Base	Good Directions - Get 'em There on Time (Lost = Cost) & Eliminate Distracted Driving – Save \$50,000
Option 3: Second Base	Signs – It Helps to Know Where You're Going & Jobsite Safety to Eliminate Hazards – Save \$50,000
Option 4: Third Base	Idle Time – Idle Trucks Waste Big Bucks & Clean Out Trucks Properly – Added Weight Wastes Fuel & Impacts Equipment – Save \$50,000

Daily Safety Focus

Before you enter the ballgame

- PPE - Are drivers wearing it as required in the plant on company property?
- Team effort – Everyone keeping an eye out for everyone
- Be aware of your surroundings at all times
- 3 points of contact
- Recognizing potential hazards - follow up and follow through
- Coach them

PPE: Personal Protective Equipment

Before you enter the ballgame

• One of most important aspects of safety is PAYING ATTENTION!

MIND ON THE JOB



➔

MIND ON SAFETY



HOME PLATE: AROUND THE TRUCK

Correct Tire Pressure and PRE-TRIP Inspection (BEFORE you hit the road)



Fleet Benchmarking Study shows companies check tire pressures on intervals of:

- Daily 41%
- Weekly 31%
- Biweekly 6%
- Monthly 22%

Which is the safest?

Incorrect tire pressure leads to:

- Faster Tire Wear/Hot Tires/Damage
- Poor Fuel Mileage
- Accidents/DOT Tickets
- Downtime and Roadcalls

Fleet Benchmarking Study shows that an Average Road Call ~ \$220

Plus tire cost, downtime (avg. 2.33 hours of lost time)

FIRST BASE: ON THE ROAD

Good Directions - Get 'em There on Time (Lost = Cost)



There are multiple ways to get somewhere.

- Pick the best route:
- Best flow of traffic
 - Least amount of stop and go
 - Shortest route
 - **Safest route**

Fleet Benchmarking Study shows that a Mixer Truck gets an avg. 3.14 miles per gallon

Going out of the way just 3 miles over the course of the day wastes \$2 per truck

Save \$50,000 ANNUALLY!!!!

GIVE DRIVERS GREAT DIRECTIONS BEFORE THEY LEAVE THE PLANT.

FIRST BASE: ON THE ROAD



A driver being lost and going out of the way just ¼ mile there and back a few times a day = 1 gallon of fuel

Average Trucks uses 1.1 gallons of fuel per cubic yard

Watch for drivers that are lost or getting back late:

- Going out of the way or lost
- Driving to get hours on the clock
- Causing Overtime
- Driver Distraction
- Solution: ELDs – Electronically Track Driver Location



SECOND BASE: AT THE JOBSITE

SIGNS: It helps to know where you're going

How do we help our drivers know where to go at jobsites?



Signage at the plants and jobsites gives drivers a sense of direction!

Reuse signs at Jobsites to mark:

- Entrances
- Driving Areas
- Washout Areas
- Staging Areas
- Safety Hazards



REMEMBER: Time is wasted when drivers are looking where to go. Reduce wasted time by using signs for drivers.

AT THE JOBSITE

Jobsite Hazards: Another Cost Potential

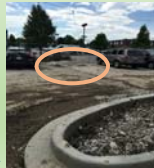


Slips, Trips, and Falls – drivers are exposed to muddy and wet conditions. This is a prime Slip, Trip, and Fall injury area.

NOTICE: The footprints in the mud!

4 things to improve:

- 1.) Customer Communication
- 2.) Washout Areas
- 3.) Driver Safety and Accident Reduction
- 4.) Adequate Lighting

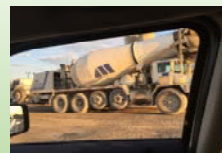


Washout box – tucked away between parked vehicles, around a tight curve, and no markings to tell drivers where to go. An accident waiting to happen.

This is a washout obstacle course!

THIRD BASE: IN THE YARD

Idle Trucks Waste Big Bucks



When does this most occur?

- 1.) When the truck sits idle at job sites while employees are talking with others instead of working or getting back on the road and shipping efficiently
- 2.) Trucks looking for where to go on jobsites. (Try using signs)

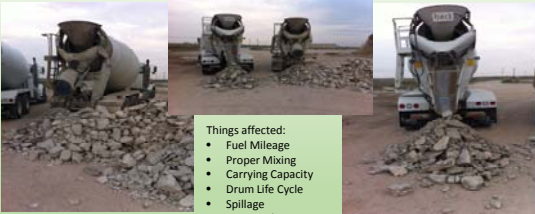
NRMCA Fleet Benchmarking Study Industry Average is 34% Idle Time

Fuel costs are a major expense for unproductive truck time

SAFETY – Know your surroundings. A common safety hazards at unfamiliar sites is Slips, Trips, and Falls. Train drivers to walk the site around the truck before unloading chutes.

THIRD BASE: IN THE YARD

Clean Out Trucks Properly – Added Weight Wastes Fuel and Impacts Equipment



- Things affected:
- Fuel Mileage
 - Proper Mixing
 - Carrying Capacity
 - Drum Life Cycle
 - Spillage
 - Wear and Tear

Fleet Benchmarking Study shows 86% of companies use outside firms to “chip out”
- Set washout standards and inspect trucks regularly for proper wash outs

WHAT IF... YOU DID ALL 4! Back Home Safe and Saving Money



\$200,000



Questions?

Thank you to NRMCA and its members for allowing us to be involved in this process for education and a better understanding of our industry.